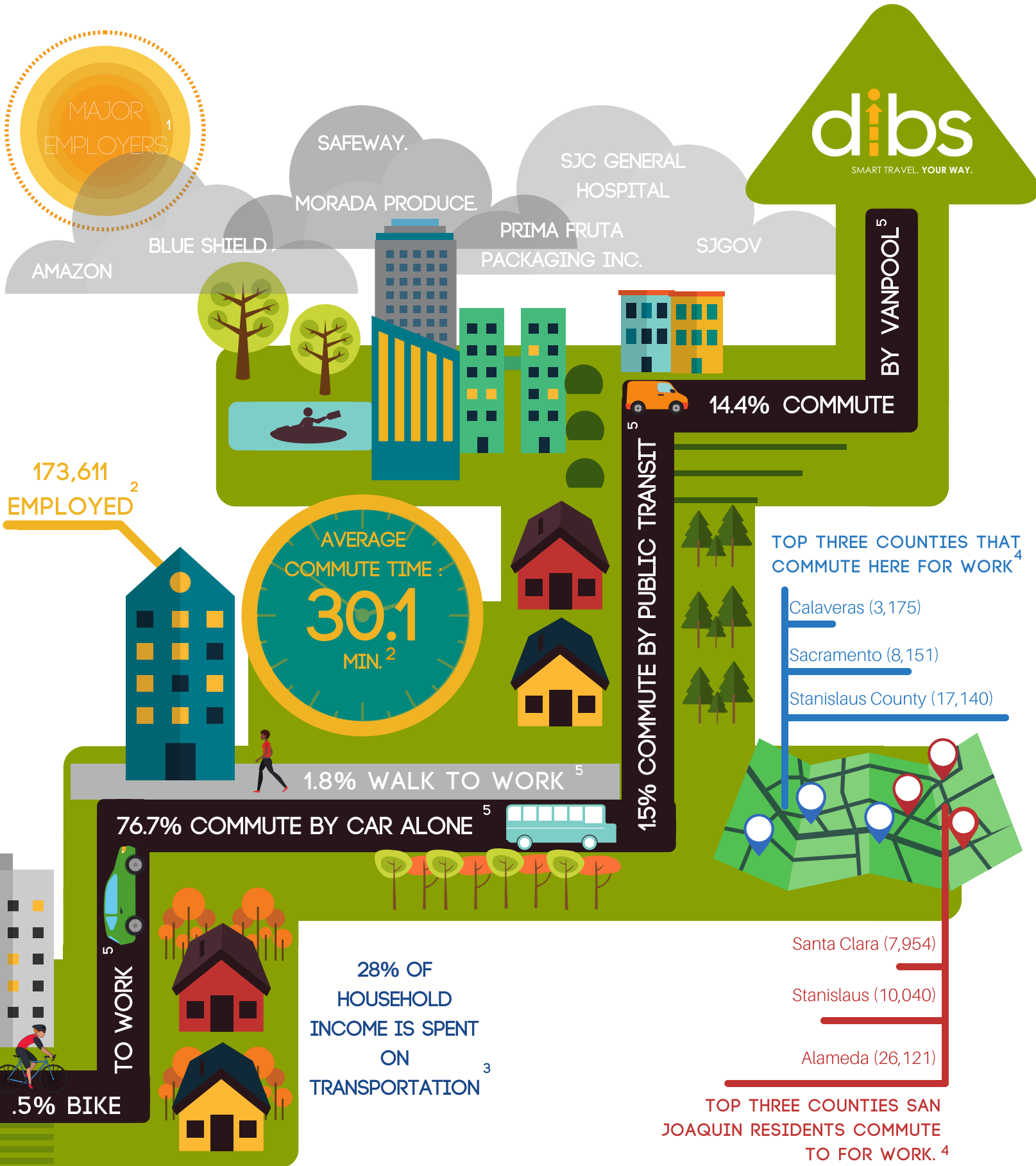


SAN JOAQUIN COUNTY FACT SHEET



Sources:
 1. America's Labor Market Information System (ALMIS) Employer Database, 2018 1st Edition. Employer information is provided by Infogroup, Omaha, NE, 800/555-5211. © 2018. All Rights Reserved. <http://www.labormarketinfo.edd.ca.gov/majorer/countymajorer.asp?CountyCode=000077>
 2. U.S. Census Bureau, County Business Patterns. Quick Facts San Joaquin County, California. 2015. <https://www.census.gov/quickfacts/fact/table/sanjoaquincountycalifornia/BZA110215#viewtop>
 3. Center for Neighborhood Technology. Housing and Transportation Index. 2017. <https://htaindex.cnt.org/map/#>
 4. Special Report of 2006 to 2010 County-to-County Commuting Flows, American Community Survey, U.S. Census Bureau, report released January 2013
 5. Commuting Characteristics by Sex. American Community Survey 2012-2016 American Community Survey 5-Year Estimates

STANISLAUS COUNTY FACT SHEET



MAJOR EMPLOYERS ¹

AMAZON

FOSTER FARMS

CON AGRA FOODS INC

FRITO-LAY INC.

MACDONALD GROUP

MODESTO BEE

E & J GALLO

135,488 EMPLOYED ²



1.8% WALK TO WORK ⁵

79.6% COMMUTE BY CAR ALONE ⁵

TO WORK ⁵

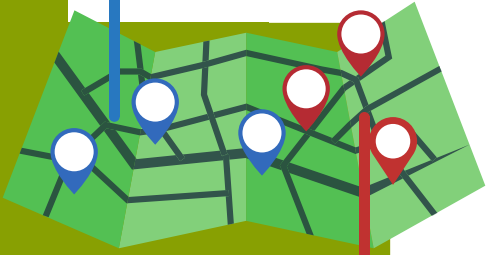
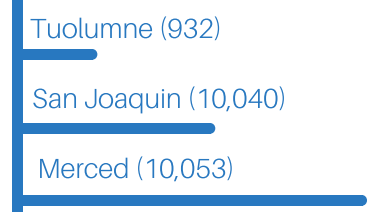
.7% BIKE

29% OF HOUSEHOLD INCOME IS SPENT ON TRANSPORTATION ³

1% COMMUTE BY PUBLIC TRANSIT ⁵

10.8% COMMUTE BY CARPOOL ⁵

TOP THREE COUNTIES THAT COMMUTE HERE FOR WORK ⁴



Merced (5,646)

Alameda (8,198)

San Joaquin (17,140)

TOP THREE COUNTIES SAN JOAQUIN RESIDENTS COMMUTE TO FOR WORK. ⁴

Sources:

1. America's Labor Market Information System (ALMIS) Employer Database, 2018 1st Edition. Employer information is provided by Infogroup, Omaha, NE, 800/555-5211. © 2018. All Rights Reserved. <http://www.labormarketinfo.edd.ca.gov/majorer/county/majorer.asp?CountyCode=000099>
2. U.S. Census Bureau, County Business Patterns. Quick Facts Stanislaus, California. 2015. <https://www.census.gov/quickfacts/fact/table/stanislauscountycalifornia/BZA110215#viewtop>
3. Center for Neighborhood Technology. Housing and Transportation Index. 2017. <https://htaindex.cnt.org/map/#>
4. Special Report of 2006 to 2010 County-to-County Commuting Flows, American Community Survey, U.S. Census Bureau, report released January 2013
5. Commuting Characteristics by Sex. American Community Survey 2012-2016 American Community Survey 5-Year Estimates

MERCED COUNTY FACT SHEET



MAJOR EMPLOYERS ¹

AMAZON

FOSTER FARMS

COSTCO WHOLESALE

UC MERCED

GALLO CATTLE CO

WALMART
LIVE OAK FARMS

BY CARPOOL ⁵

12% COMMUTE

42,036 EMPLOYED ²

AVERAGE COMMUTE TIME:
26.6
MIN. ²

TOP THREE COUNTIES THAT COMMUTE HERE FOR WORK ⁴

Fresno (948)

Madera (1,401)

Stanislaus (5,646)

1.8% WALK TO WORK ⁵

77.4% COMMUTE BY CAR ALONE ⁵

1% COMMUTE BY PUBLIC TRANSIT ⁵

TO WORK ⁵

35% OF HOUSEHOLD INCOME IS SPENT ON TRANSPORTATION ³

San Joaquin (1,610)

Santa Clara (4,118)

Stanislaus (10,053)

TOP THREE COUNTIES SAN JOAQUIN RESIDENTS COMMUTE TO FOR WORK. ⁴

.4% BIKE

Sources:

1. America's Labor Market Information System (ALMIS) Employer Database, 2018 1st Edition. Employer information is provided by Infogroup, Omaha, NE, 800/555-5211. © 2018. All Rights Reserved. <http://www.labormarketinfo.edd.ca.gov/majorer/county/majorer.asp?CountyCode=000099>
2. U.S. Census Bureau, County Business Patterns. Quick Facts Merced, California. 2015. <https://www.census.gov/quickfacts/fact/table/stanislauscountycalifornia/BZA110215#viewtop>
3. Center for Neighborhood Technology. Housing and Transportation Index. 2017. <https://htaindex.cnt.org/map/#>
4. Special Report of 2006 to 2010 County-to-County Commuting Flows, American Community Survey, U.S. Census Bureau, report released January 2013
5. Commuting Characteristics by Sex. American Community Survey 2012-2016 American Community Survey 5-Year Estimates