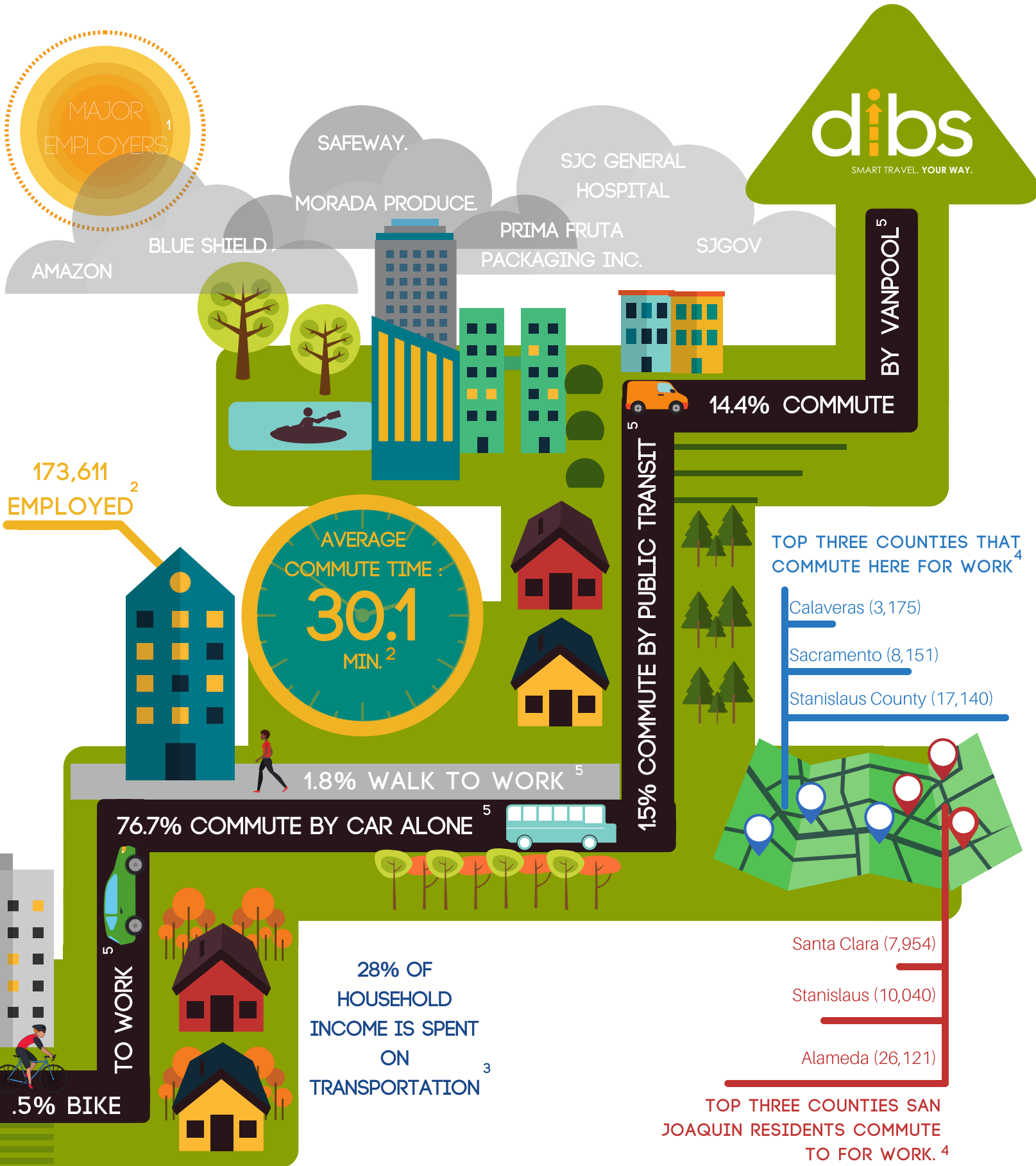


SAN JOAQUIN COUNTY FACT SHEET



Sources:
 1. America's Labor Market Information System (ALMIS) Employer Database, 2018 1st Edition. Employer information is provided by Infogroup, Omaha, NE, 800/555-5211. © 2018. All Rights Reserved. <http://www.labormarketinfo.edd.ca.gov/majorer/countymajorer.asp?CountyCode=000077>
 2. U.S. Census Bureau, County Business Patterns. Quick Facts San Joaquin County, California. 2015. <https://www.census.gov/quickfacts/fact/table/sanjoaquincountycalifornia/BZA110215#viewtop>
 3. Center for Neighborhood Technology. Housing and Transportation Index. 2017. <https://htaindex.cnt.org/map/#>
 4. Special Report of 2006 to 2010 County-to-County Commuting Flows, American Community Survey, U.S. Census Bureau, report released January 2013
 5. Commuting Characteristics by Sex. American Community Survey 2012-2016 American Community Survey 5-Year Estimates